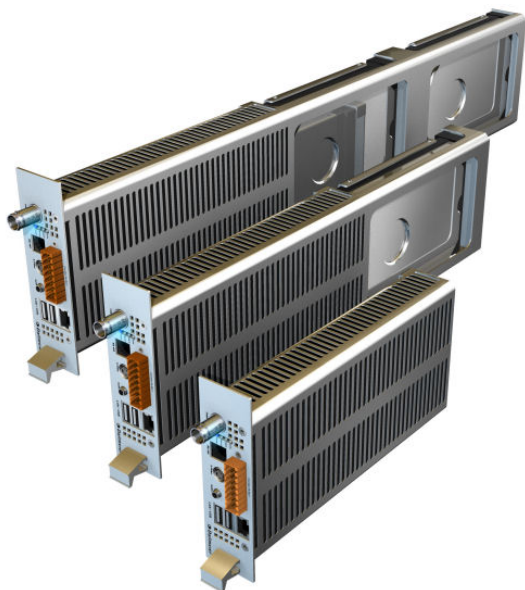


DIS-2/M



1-channel MPEG-2/4 real-time streamer and recorder

Features

- Slide-in unit in standard version without hard disks
- Camera inputs: CVBS (BNC) and S-Video (mini DIN 4)
- Data rate (constant and dynamic): 128 Kbit/sec. – 16 Mbit/sec.
- Video (PAL): up to 720x576 at 25 frames/sec.
- Various video and audio standards can be selected freely
- Other inputs/outputs:
 - 1x 100 Base T x RJ45
 - 1x RS232/RS485 RJ12
 - 4x input contacts
 - 4x output contacts
 - 1x AudioIN 3.5mm phone jack

Options

- Max. 2 hard disks à 500 GB
- DIS-2/M component rack
- Parallel recording

Item number

- SL002.ENC.700B.001

DIS-2/M

Format

Video	MPEG-2 MP@ML (progressive or interlaced) MPEG-4 ISO/IEC 14496 MJPEG
Audio	MPEG-1 Layer 2 MP3 (planned) G.722 (planned)

Video IN / OUT

Video IN (CVBS)	1x BNC
Video IN (S-Video)	1x mini DIN 4
Video OUT	Streaming (LAN)

Audio IN / OUT

Audio IN	1x 3.5 mm phone jack
Audio OUT	Streaming (LAN)

Hard disks

Quantity	Max. 2
Type	3,5"
Interface	SATA2

Interfaces

LAN	1 x RJ45, 10/100 Mbit
Contact IN	4 x on 16-pole Weidmüller connection strip, 1 function per contact
Relay OUT	4 x on 16-pole Weidmüller connection strip, configurable as maker or breaker
Serial	1 x RJ12, RS232 / RS485
USB	none

Other hardware details

Mains voltage (incl. admissible tolerance)	12V DC
Power consumption	Max. 25 W
Dimensions	Appr. W 41 x H 129 x D 553 mm
Temperature	+5°C to 40°C
Humidity	5 - 70 % (not condensing)
Weight	Appr. 2.5 kg (incl. 2 HDDs)
Languages	German, English, French, Spanish (others on request)